

4. INSTALLATION BLUEBOT APP

BLUEBOT APPLICATION

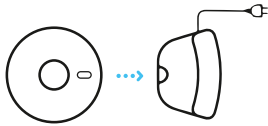
1 Fully charge robot

2 Download Bluebot app

3 Steps for registration

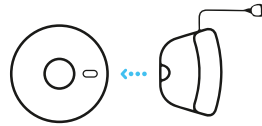
4 Connect robot with app (steps)

1



Place the robot in the charging station to charge and make sure it's fully charged before use.

2



Remove the robot from the charging station.

3



Make sure the Robot is on, by holding in the 'On button' for a few seconds on top of the robot. Wait until the robot has started fully.

4



Download the Bluebot app. The app can be found in the Appstore and Google Play.

5



Register a new account if you are not yet an existing user.

6



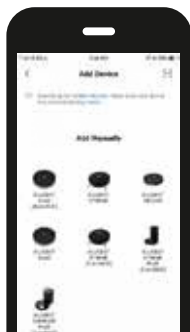
Open the Bluebot app and press the '+ icon' to add your device.

INSTALLATION BLUEBOT APP



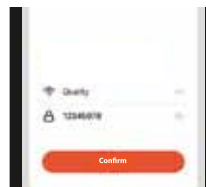
7

Select the
BLUEBOT COMFORT PLUS
(2.4 + 5Ghz)



8

Select your wifi network,
enter the password and
press confirm.



9



After your registration, make sure the robot is removed from its charging station. Turn on your Robot by pressing the 'On button'. After that is done, press both the 'Home button' and 'On button' simultaneously for more than 3 seconds until the robot mentions that it lost its wifi connection.

10

Tick 'Confirm power on
key blue slow flash' when
applicable and press 'Next'.



11

Press on the 'Go to
connect' button in the
bottom of your screen.



12

Select the 'SmartLife
xxx' network from the
list and return to the
Bluebot app.

Your robot will now
connect to the App.

